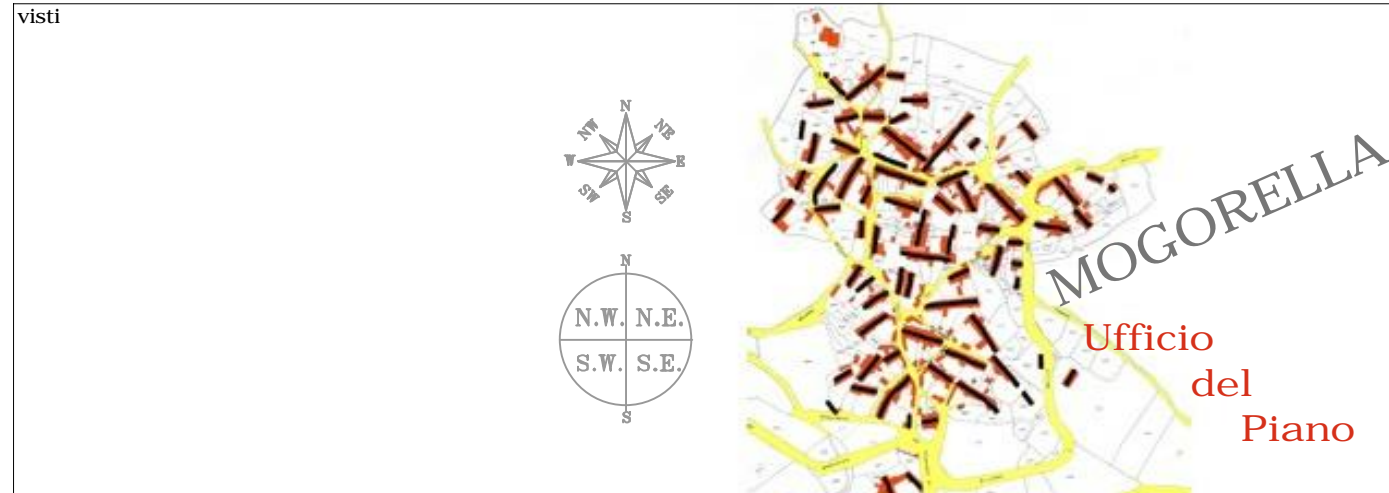


COMUNE DI MOGORELLA

regione sardegna - provincia di oristano



PIANO PARTICOLAREGGIATO DEL CENTRO MATRICE

(CENTRO DI ANTICA E PRIMA FORMAZIONE)

(zona "A" in adeguamento al P.P.R. - zone "B" interne al centro matrice)

ABACO DELLE TIPOLOGIE EDILIZIE

ELABORATO	14	SCALA	ALLEGATO
emissione	adozione	revisione/riapprovazione	approvazione definitiva
data MARZO 2017	data 07 luglio 2016	data _____	data _____
	Delib. C.C. N. 19/2016	Delib. C.C. N. _____	Delib. C.C. N. _____

AREA TECNICA - SERVIZIO URBANISTICA - UFFICIO DEL PIANO

Responsabile: Dott. Arch. Manuela Selis

Progetto: Sud Ovest Engineering S.r.l. - Cagliari

SOE

SUD OVEST ENGINEERING S.R.L.

Ingegneria
Architettura
Urbanistica
Ambiente
Territorio
Green energy
Consulting engineering
Servizi integrati di outsourcing
Engineering and contracting

Vale Marconi n. 87, 09131 CAGLIARI
Codice fiscale e partita IVA: 03454150925
Tel.: 070.8571341
Fax.: 070.8571341
sudovestengineering@gmail.com
soesrl@legalmail.it
www.sudovestengineering.it

Direttore Tecnico (art. 254 D.P.R. 207/2010)
Dott. Ing. Andrea Lostia

Progettista Responsabile: Dott. Ing. ANDREA LOSTIA

Unità Operativa: Dott. Ing. Andrea Lostia
Dott. Geol. Tiziana Carrus
Ing. iunior Giuseppe Sulis
Dott. Arch. Stefania Mascia
Tecnico GIS Giuseppe Monni

ABACO TIPOLOGICO

Abaco delle tipologie edilizie presenti nel Centro Matrice

Impianti planimetrici di base a una o due cellule

Aa Impianti planimetrici di base a due cellule

Aa-1 Bicellula in profondità su un livello

Aa-2 Bicellula in profondità su due livelli

Aa-4 Bicellula in larghezza su un livello, con loggiato

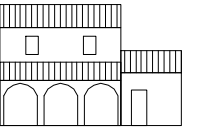
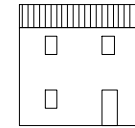
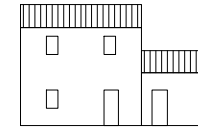
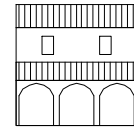
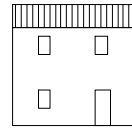
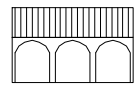
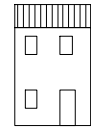
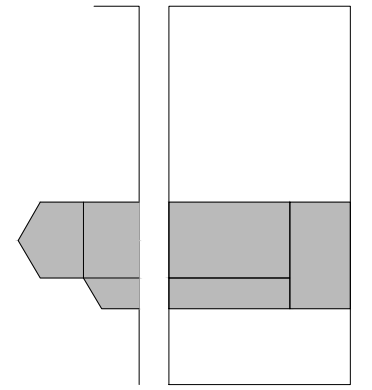
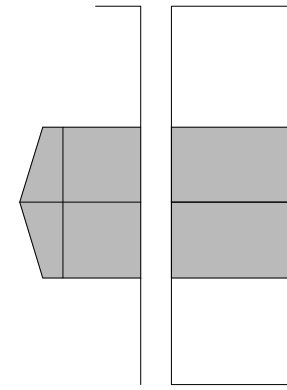
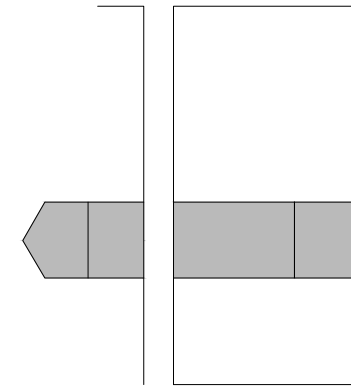
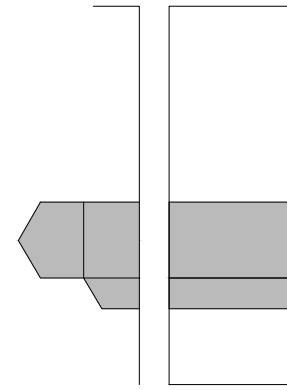
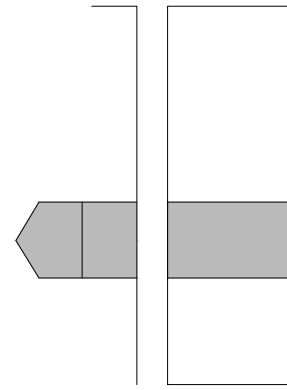
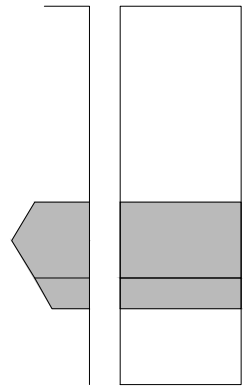
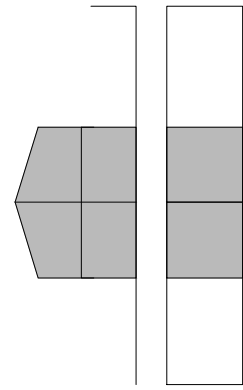
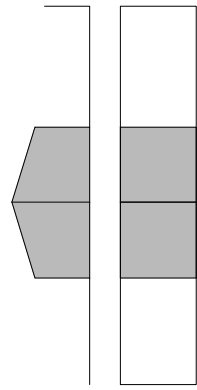
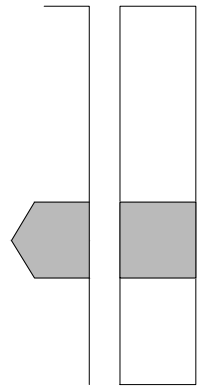
Aa-5 Bicellula in larghezza su due livelli

Aa-6 Bicellula in larghezza su due livelli, con loggiato

Aa-7 Bicellula in larghezza su due livelli, con aggiunta laterale

Aa-8 Bicellula in larghezza e in profondità su due livelli

Aa-9 Bicellula in larghezza su due livelli, con loggiato e aggiunte laterali



SCHEMA BASE



Impianti planimetrici di base a tre o più cellule

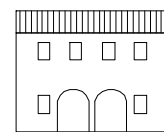
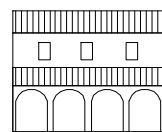
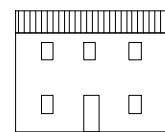
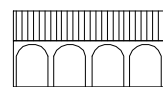
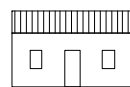
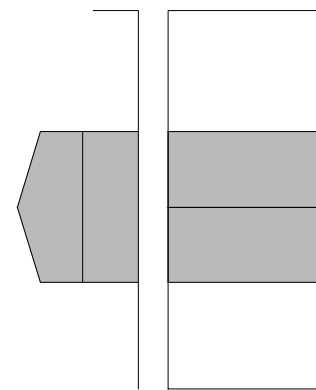
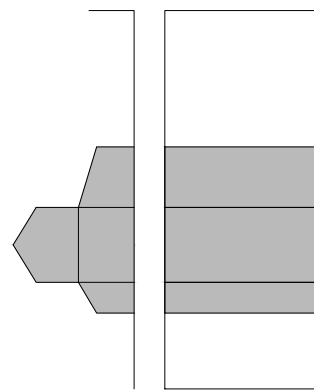
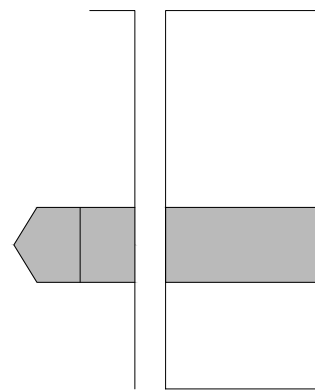
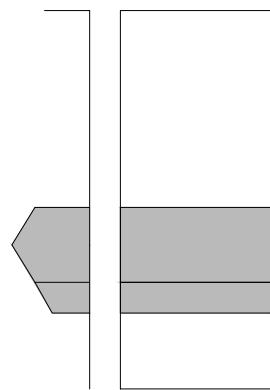
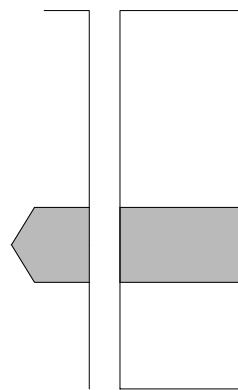
Ab Impianti planimetrici di base a tre o più cellule

Ab-1 Tre o più cellule in larghezza su un livello, con loggiato

Ab-2 Tre cellule in larghezza su due livelli

Ab-3 Tre cellule in larghezza su due livelli, con aggiunta sul retro e loggiato

Ab-5 Tre o più cellule in larghezza su due livelli, con loggiato inglobato



SCHEMA BASE

SVILUPPO IN LARGHEZZA

SVILUPPO IN ALTEZZA

SVILUPPO IN LARGHEZZA, IN PROFONDITÀ E IN ALTEZZA



Abaco dei tipi edilizi a corte doppia e antistante

ABACO TIPOLOGICO

Abaco delle tipologie edilizie presenti nel Centro Matrice

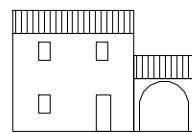
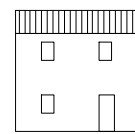
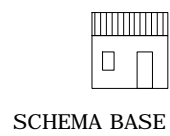
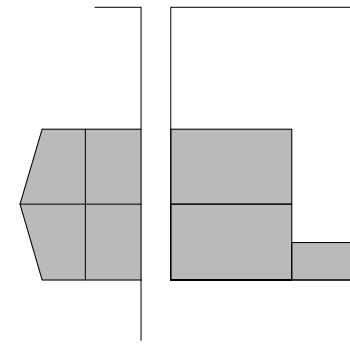
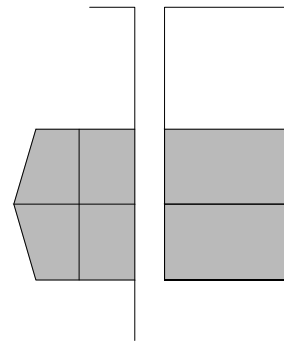
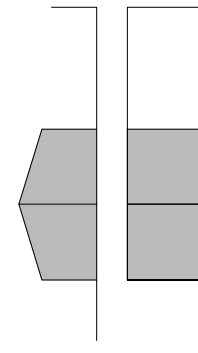
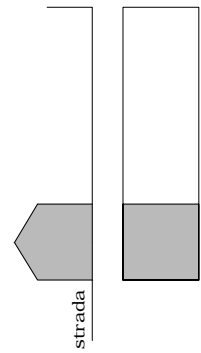
Impianti planimetrici di base a due cellule

Ba impianti planimetrici di base a due cellule

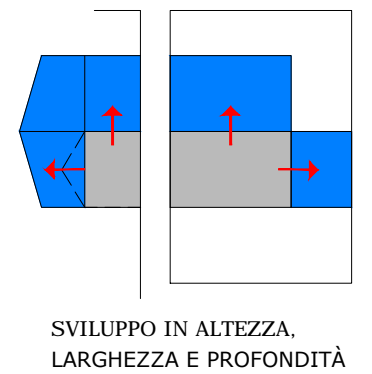
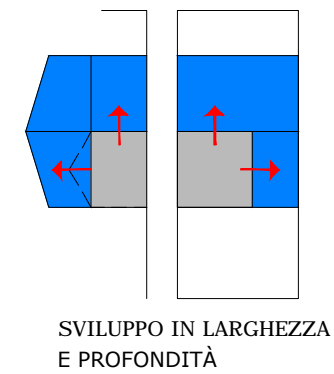
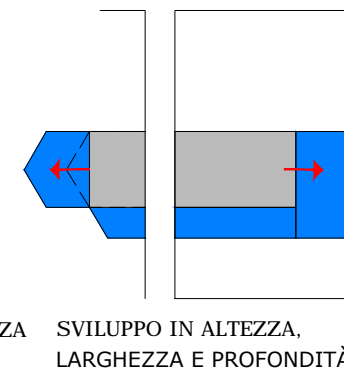
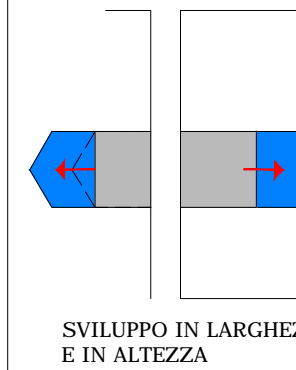
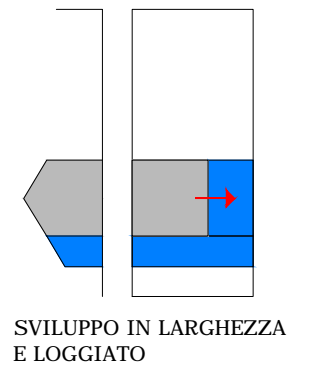
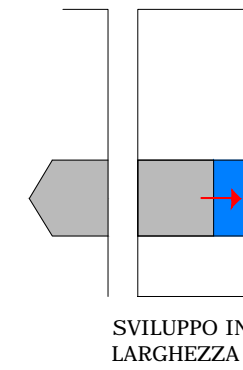
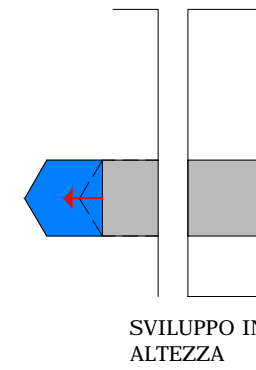
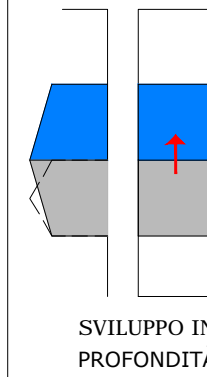
Ba-1 Bicellula in profondità su un livello

Ba-5 Bicellula in larghezza e in profondità su due livelli

Ba-6 Bicellula in larghezza e in profondità su due livelli, con passo carraio laterale



Sviluppo delle abitazioni di base a una o due cellule



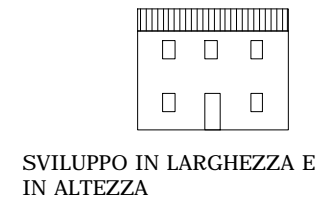
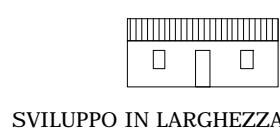
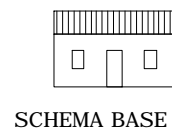
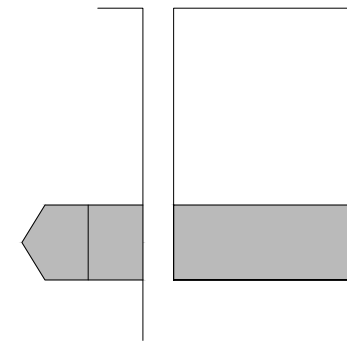
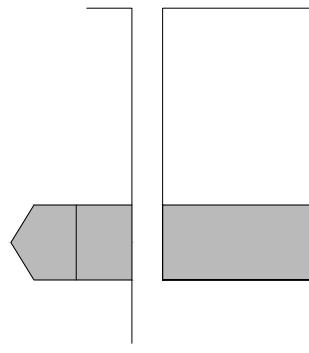
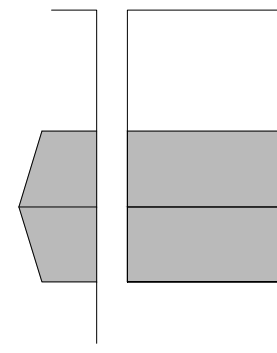
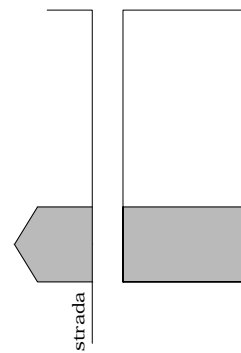
Impianti planimetrici di base a tre o più cellule

Bb Impianti planimetrici di base a tre o più cellule

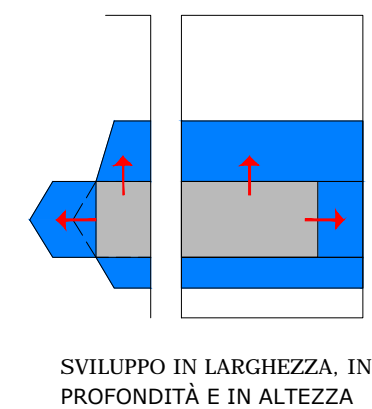
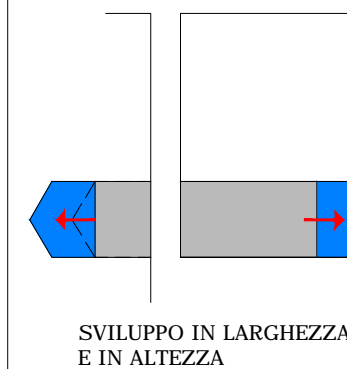
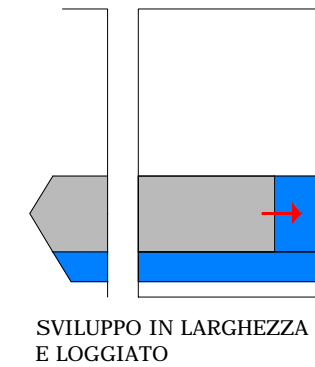
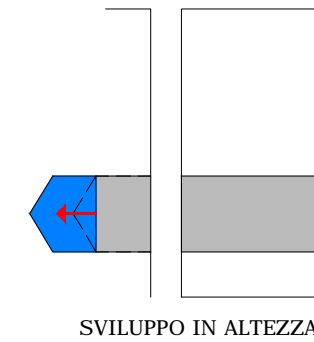
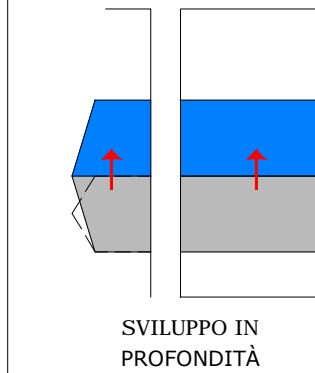
Bb-1 Tre cellule in larghezza e in profondità su un livello, con "sala"

Bb-2 Tre cellule in larghezza su due livelli

Bb-4 Tre cellule in larghezza su due livelli, con passo carraio inglobato



Sviluppo delle abitazioni a tre o più cellule



Abaco dei tipi edilizi a corte retrostante